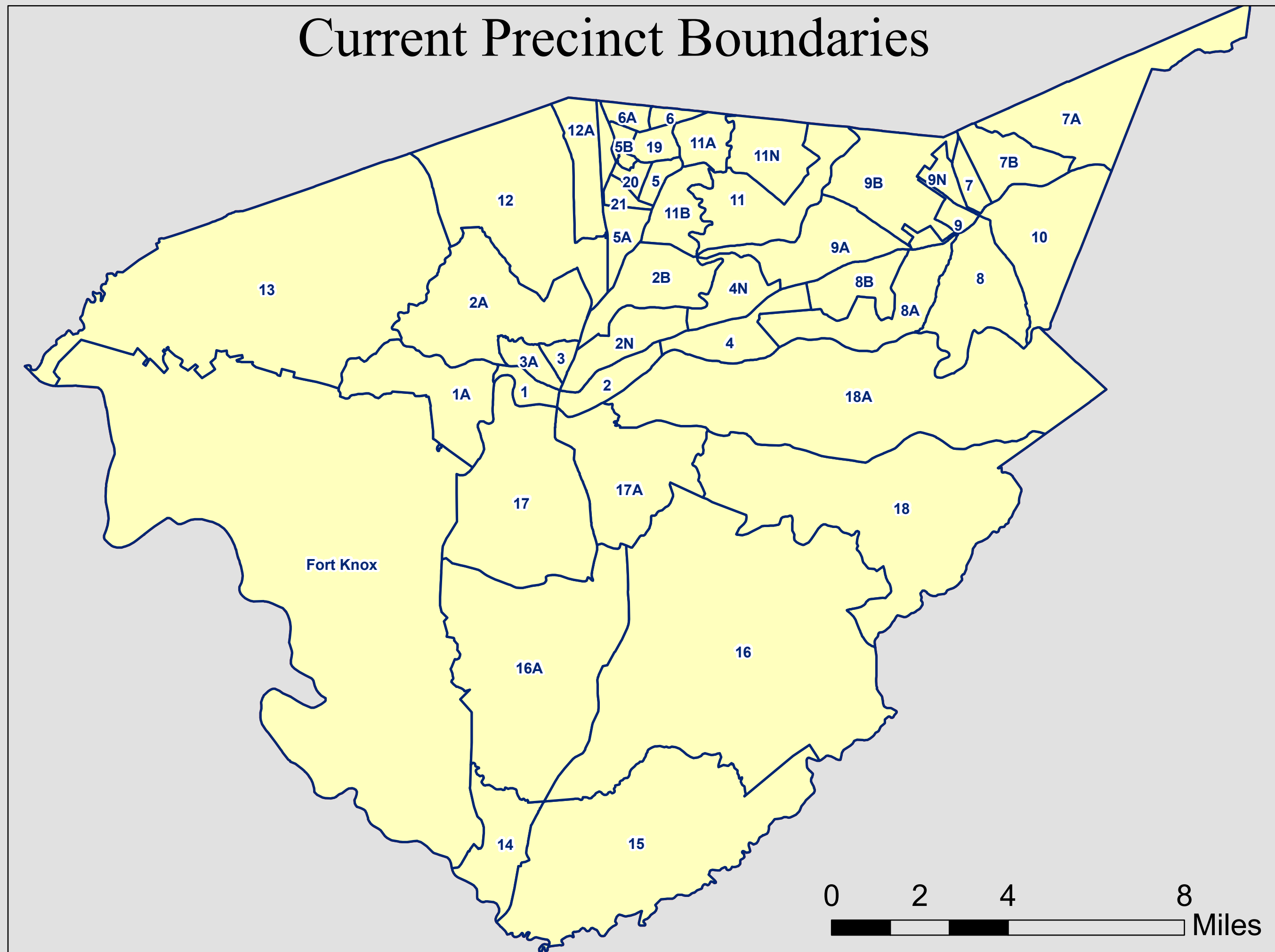
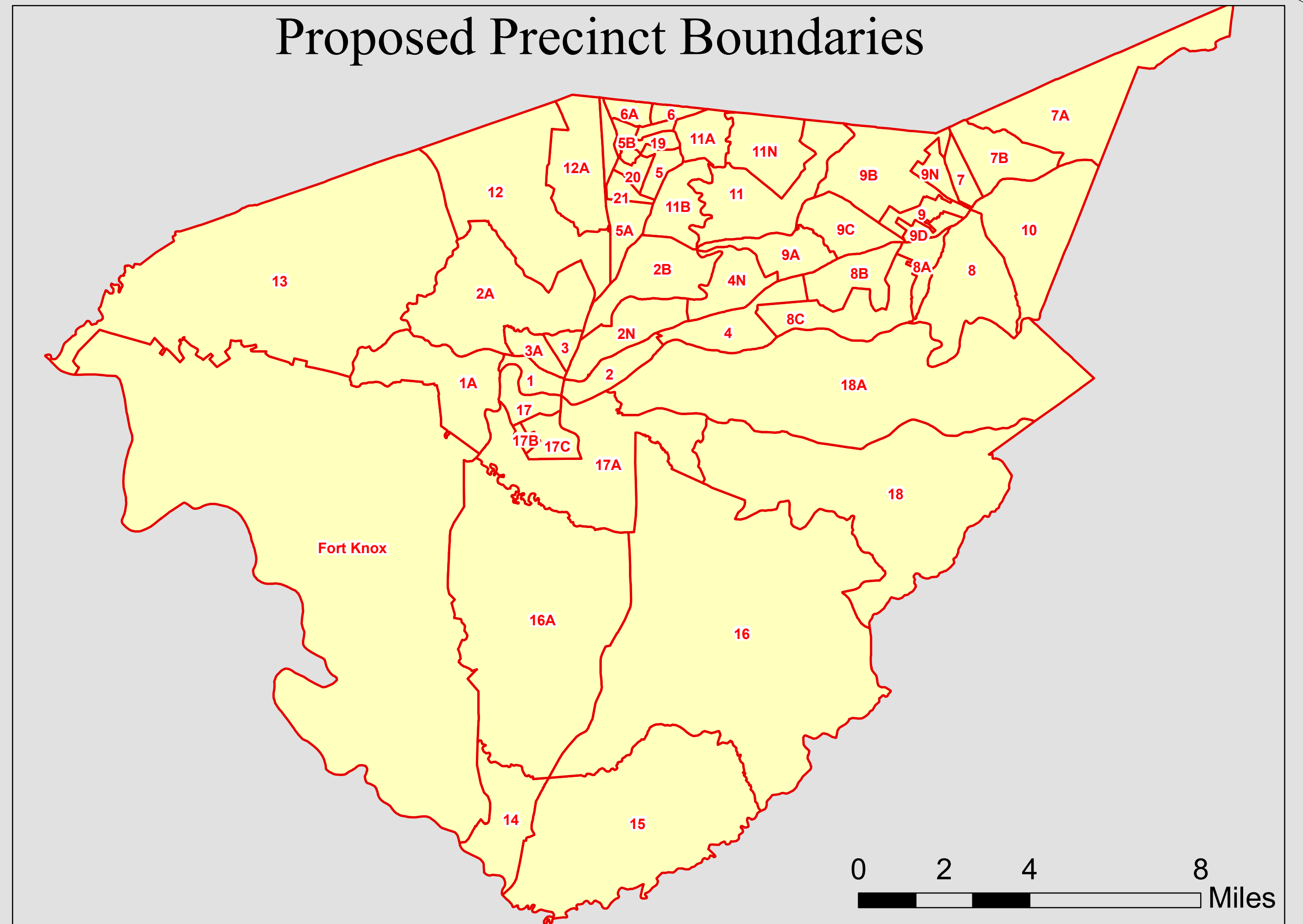


Redistricting Bullitt County

Current Precinct Boundaries



Proposed Precinct Boundaries



Problem:

Bullitt County has voting precincts with too many voters than they can accommodate. This problem causes long voting lines. There are also conflicts with precincts containing both voters located inside and outside of cities. This leads to voters occasionally not voting in all elections that are eligible to them, or voting in elections they are not eligible for.

Solution:

Redistrict the voting precincts using GIS to determine the most effective way of reducing the amount of voters in a precinct to a reasonable number while having the least possible City/County voter overlap. The process consisted of geocoding the locations of the voters in Bullitt County, using topology to create new boundaries on pre-existing physical features (i.e. roads, streams, treelines, etc), and analyzing the results to see if it produced a reasonable number of voters in each precinct and reduced the amount of City/County voter overlapping.

Bryan Risinger 4/29/2009
Data courtesy of LOJIC, LRC,
Kentucky OGI, ESRI, and KY SBE

Priority Precinct

For precincts 16A, 17, and 17A some heavy work was needed. 17 contained both city and county voters, and it contained too many voters. 16A and 17A had a low number of voters. I first merged a section of 17 with 16A, and merged another section with 17A. The latter fixed the county/city overlap issue because the new line followed along the Shepherdsville City Limits. However, what was left of 17 still had a large amount of voters. To fix this I cut the precinct into 3rds, producing 3 precincts, 17, 17B, and 17C, all with approximately equal number of voters.



- Current Voting Precincts
- Proposed Voting Precincts

Priority Precinct: 16A, 17 and 17A (Current Boundaries)



Priority Precinct: 16A, 17 and 17A (Proposed Boundaries)

